

# DOWNLOAD & PRINT \$2 CHOCOLATE BAR SPRING WRAPPERS

## **INSTRUCTIONS**

Print the following pages of chocolate bar wrapper designs, as many as you need.

Using scissors or a paper cutter, cut out each printed sheet in half where the two wrapper designs meet. Finished wrapper size is 8.5" x 5.5".

To adhere the wrapper to the bar, wrap the printout around the bar, centering it. Apply a piece of double-stick tape to the underside of the outer flap that has a graphic on it (so the blank flap will end up being underneath), and press to adhere to the top of the other side of the wrapper.

You can put out the wrappers with the candy bars on your fundraising table, along with some double-sided tape, for customers to select the design.

OR

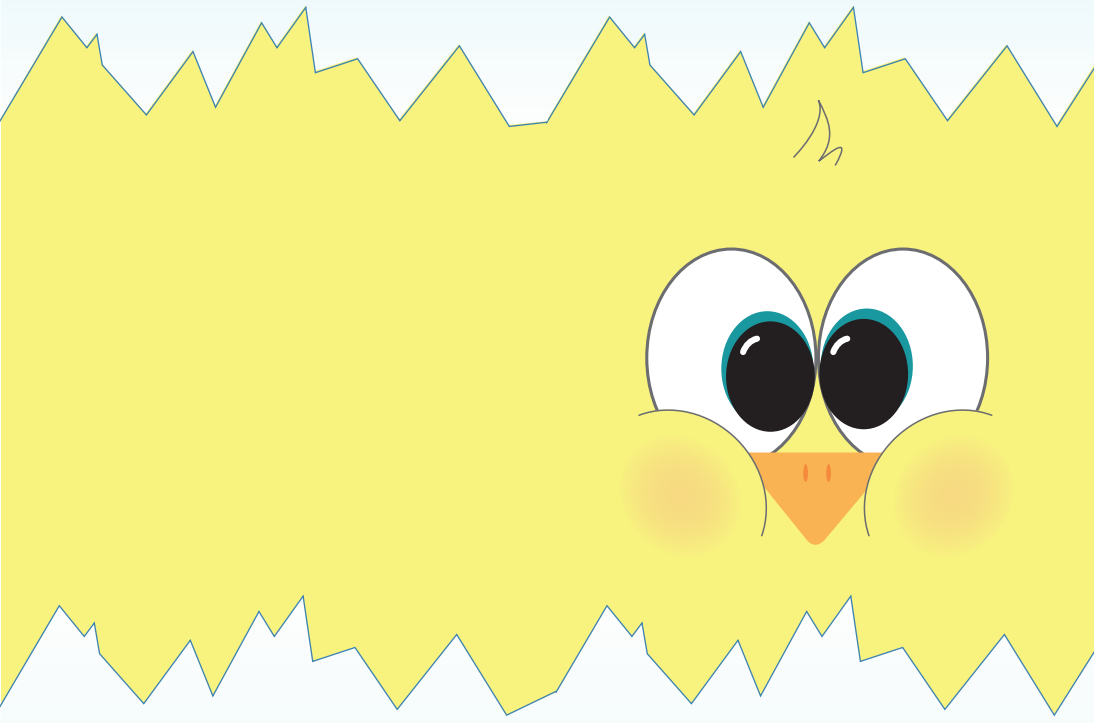
You can pre-wrap the bars yourself. If you are selling different chocolate bar flavors, be sure to keep them organized in some manner so you as well as your customers know what they are buying.

# \$2 CHOCOLATE BAR TEMPLATE

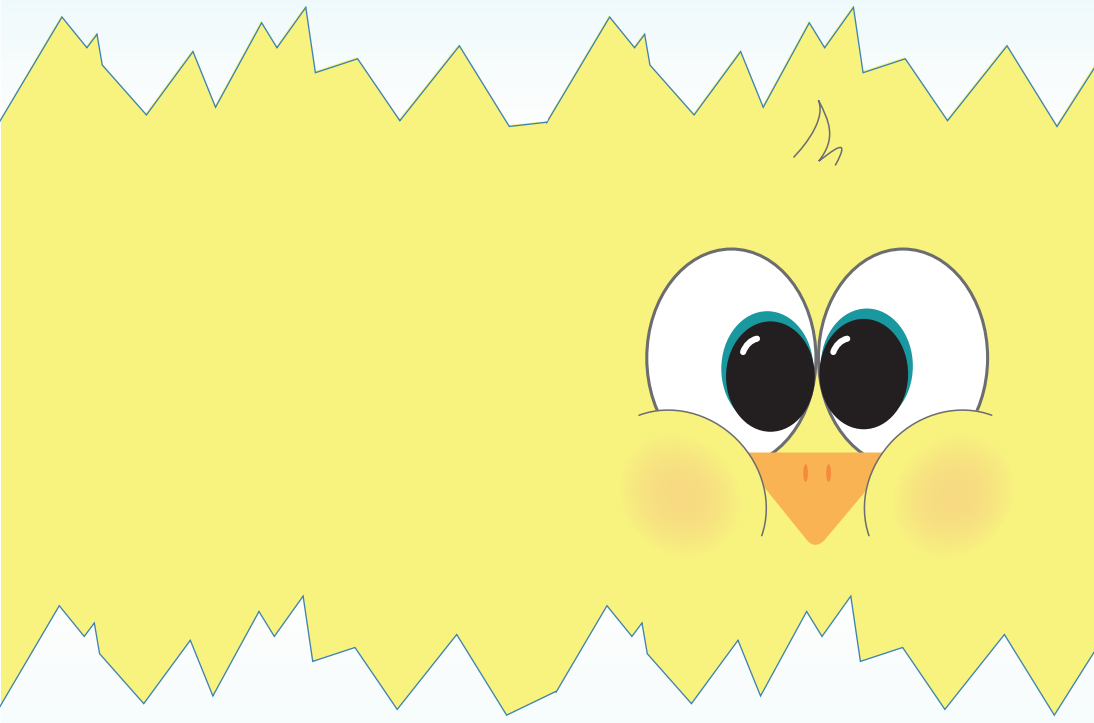
cut designs on the solid lines designated here



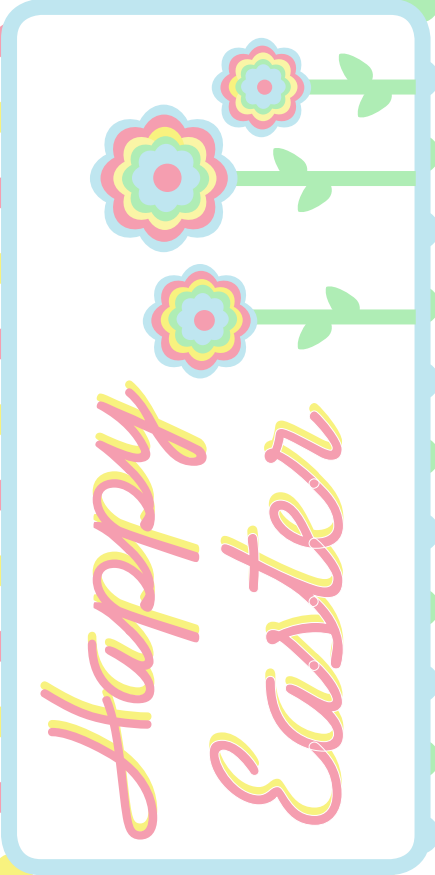
5½"



FOLD THIS SIDE UNDER



FOLD THIS SIDE UNDER



FOLD THIS SIDE UNDER

FOLD THIS SIDE UNDER



SPRING  
HAS  
SPRUNG

SPRING  
HAS  
SPRUNG

FOLD THIS SIDE UNDER

FOLD THIS SIDE UNDER

# DOWNLOAD & PRINT LOLLIPOP STANDS

## **INSTRUCTIONS**

Print the following pages of stands, as many as you need.

Using scissors, cut out the designs on each sheet. Then, use a hole punch or the tip of the scissors to make two holes where they are marked on the design. Then turn the lollipop upside down and feed the stick through the holes so the animal's face is in front of the stick, and the candy is in resting on its feet.

Optional: use tape or glue to adhere the bottom of the lollipop to the feet. Add ribbon or other decorations to your lollipop stands if you want.

You can put out the stands with the lollipops on your fundraising table, along with some double-sided tape or glue, for customers to select the design they want.

OR

You can pre-wrap the lollipops yourself. If you are selling different flavors, be sure to keep them organized in some manner so you as well as your customers know what they are buying.